



KARIBAN

REFERENCE : K446

SIZES : XS_S_M_L_XL_XXL_3XL_4XL

COMPOSITION :

Main fabric : Brushed Combed Cotton / Polyester fleece 80/20 - 280 80%cotton / 20%polyester

Fabric 1 : Cotton single jersey (22/1) - 180 For hood lining, neckline property tape. 100%cotton

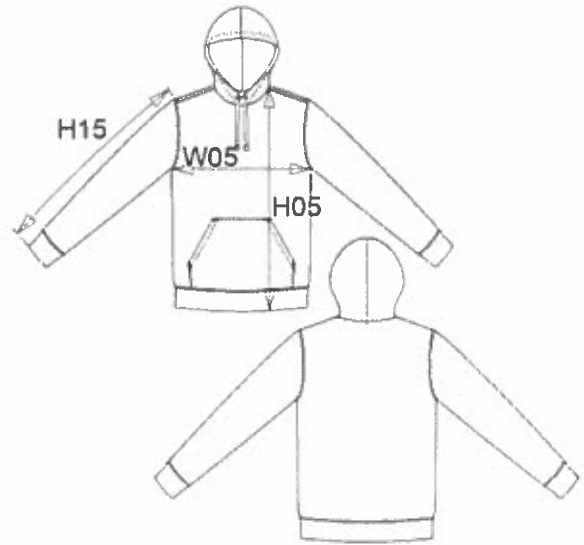
WEIGHT :

Main fabric : 280 gsm

Fabric 1 : 180 gsm

ARTICLE WEIGHT :

560 gr/pc



DESCRIPTION										COLORS		PANTONE SERIGRAPHIE		
Français : Sweat-shirt capuche contrastée English : Contrast hooded sweatshirt Nederlands : Sweater met gecontrasteerde capuchon Deutsch : Bicolor kapuzen sweatshirt Español : Sudadera con capucha contrastada Italiano : Felpa cappuccio bicolore Português : Sweatshirt com capuz em contraste										Red / White		200C / White		
										Black / Red		Black / 200C		
										Orange / White		1585C / White		
										Light kelly green / White		7482C / White		
										White / Fine grey		White / 877C		
										Black / Yellow		Black / 1235C		
										Dark grey / Black		447C / Black		
										Light royal blue / Yellow		653C / 1235C		
										Navy / Fine grey		433C / 877C		
										Oxford grey / Navy		Based on Cool gray 7C / 433C		
										Black / Fine grey		Black / 877C		
										Tropical blue / White		7468C / White		
										Navy / Red		433C / 200C		
										Light royal blue / White		653C / White		
										Fuchsia / Fine grey		7425C / 877C		
										Sky blue / White		278C / White		
										Purple / Oxford grey		7447C / Based on Cool gray 7C		
MEASUREMENT														
Description	XS	S	M	L	XL	XXL	3XL	4XL						
W05 (M) 1/2 largeur poitrine à 1.5cm de l'emmanchure / 1/2 chest width at 1.5cm below armhole	49	52	55	58	61	64	67	70						
H05 (M) Hauteur totale / Total height	69	71	73	75	77	79	81	83						
H15l (M) Longueur manche avec bord côte / Sleeve length with rib	63	64	65	66	67	68	69	70						
CARE LABEL														
PACKING														
Box	20 pcs / box													
	Size => L:60cm W:40cm H:cm GW:kg NW:kg													

KARIBAN

REFERENCE : K453

SIZES : 6/8_8/10_10/12_12/14

COMPOSITION :

Main fabric : Brushed Combed Cotton / Polyester fleece 80/20 - 280 80%cotton / 20%polyester

Fabric 1 : Cotton single jersey (22/1) - 180 For hood lining, neckline property tape. 100%cotton

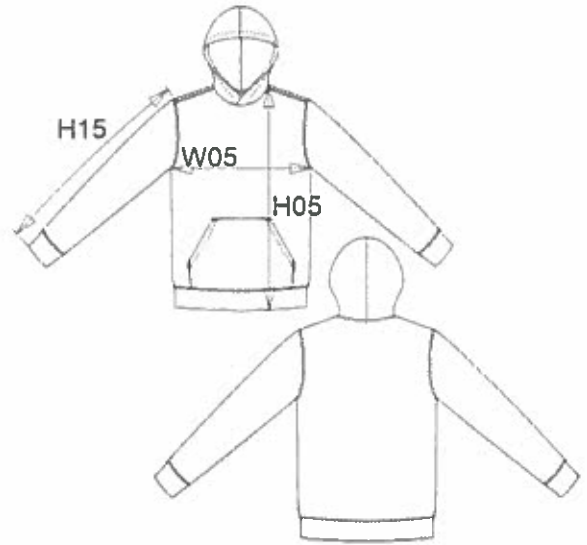
WEIGHT :

Main fabric : 280 gsm

Fabric 1 : 180 gsm

ARTICLE WEIGHT :

350 gr/pc



DESCRIPTION
Français : Sweat-shirt capuche contrastée enfant
English : Kids' contrast hooded sweatshirt
Nederlands :
Deutsch : BICOLOR KAPUZEN SWEATSHIRT FÜR KINDER
Español : SUDADERA CON CAPUCHA CONTRASTADA PARA NIÑO
Italiano : FELPA BAMBINO CON CAPPuccio IN CONTRASTO
Português : Sweatshirt de criança com capuz em contraste

COLORS	PANTONE SERIGRAPHIE
Red / White	200C / White
Black / Red	Black / 200C
Light kelly green / White	7482C / White
White / Fine grey	White / 877C
Black / Yellow	Black / 1235C
Light royal blue / Yellow	653C / 1235C
Navy / Fine grey	433C / 877C
Oxford grey / Navy	Based on Cool gray 7C / 433C
Navy / Red	433C / 200C
Black / Fine grey	Black / 877C
Light royal blue / White	653C / White
Fuchsia / Fine grey	7425C / 877C
Sky blue / White	278C / White
Purple / Oxford grey	7447C / Based on Cool gray 7C

MEASUREMENT						
Description	6/8	8/10	10/12	12/14		
H05 Hauteur totale avec BC / Total height with rib	49,50	54,50	59,50	64,50		
W05 1/2 largeur poitrine / 1/2 chest width	39	42	45	48		
H15 Longueur manche avec BC / Sleeve length with rib	45,50	49,50	53,50	57,50		

CARE LABEL

PACKING	
Box	20 pcs / box Size => L:60cm W:40cm H:cm GW:kg NW:kg